

The Budehaven English Learning Journey: How does Literature hold a mirror to the world around us?

Good luck in your Exams!

Prose Revision – How do ideas about the supernatural and human behaviour compare?

Victorian Poetry: What do we learn about love and conflict in Victorian society?

NEA Text 2 – Guided choice – what do we learn about behaviour in different societies?

YEAR 13



How does literature hold a mirror to the world around us?

Final revision and exam walk throughs.

The art of tragedy: How do 'Streetcar' and 'Othello' create tragedy and tragic heroes?



NEA Text 1: The Great Gatsby - What do we learn about society and gender through a modern text?



Dracula – How does society respond to those we perceive as evil or different?



Poems of the Decade – how is human nature and behaviour explored through poetry?

Othello – How does jealousy and prejudice affect the way we treat others? What does it mean to be a villain?

How do those who have power treat those who do not?

A Streetcar named Desire – how does traumatic experience affect the way we behave?



The Picture of Dorian Gray – How does an evil nature affect behaviour and how you treat others?



An Introduction to Tragedy: what does it mean to be a tragic hero?



YEAR 12



Preparing for the world around us.

Mock Exams – walk through and practice

Non-Fiction reading and writing: How do we communicate our experiences; how do our experiences compare to others?

Modern Text – How do powerful people influence society?

YEAR 11

Creative Writing – How can settings represent feelings?



Non-Fiction – what evils are around us and how do our experiences compare to others?



Creative writing – How do writers use their work to explore conflict and human nature?

Understanding human nature – are we all born good or evil?

Jekyll and Hyde – How do good and evil exist within us all?

Macbeth – Are we born evil, or is evil created? How is human nature corrupted?



Conflict poetry – How do poets explore ideas of evil and conflict in society?

YEAR 10



Stand Up and Speak Out – How language is used to communicate and influence human behaviour.

Touching the Void – Literary Non-Fiction. How do humans respond to extreme danger?



Romeo and Juliet – How does love and conflict shape human behaviour?



Understanding what shapes human behaviour

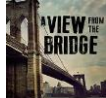
WWI Poetry – How can poetry show us how humans respond to trauma, grief and danger?

Of Mice and Men – How are prejudices formed and how do they affect human behaviours?

The Gothic – How does fear and grief shape human behaviour?

YEAR 9

A Christmas Carol – How does experience affect human behaviour for the individual and society?



A View from the Bridge – How does our behaviour and prejudices impact on those around us?

Dystopian Worlds – How can human nature be destructive? What is power and how does it impact society?

Understanding the individual and society

Poetry through the ages – How does poetry show us human experience and who we are?

Chaucer – How do different characters demonstrate different aspects of human nature and behaviours?

Autobiographies – what can we learn about ourselves and the world from others' experiences?

Gateways to Other Worlds: Human experience and the world around us. How can we create a world that represents who we are?



Shakespeare - Heroes and Villains: Human Nature. How does language reflect human nature?



'Percy Jackson' – The heroes Journey, what does it mean to be a hero?

YEAR 8

Understanding the world around me

A World in Writing. (Non-Fiction): Human experience and the world around us. What can we learn from the world around us?

Local Heritage (Heraldry and History) Human experience and the world around us. What does it mean to be Cornish?



Mythology – The study of human experience and the world around us: What shapes our understanding of the world?



Getting to know you: Reading age test, writing about yourself and your experiences.

YEAR 7

Mythology

The study of human experience and the world around us:
What shapes our understanding of the world?



Unit Aims

To explore different origin myths considering similarities and differences between cultures.

To learn about some of the heroes and monsters from mythology.

To have an understanding of the importance **of sense-making and story-telling in human civilization** throughout history.

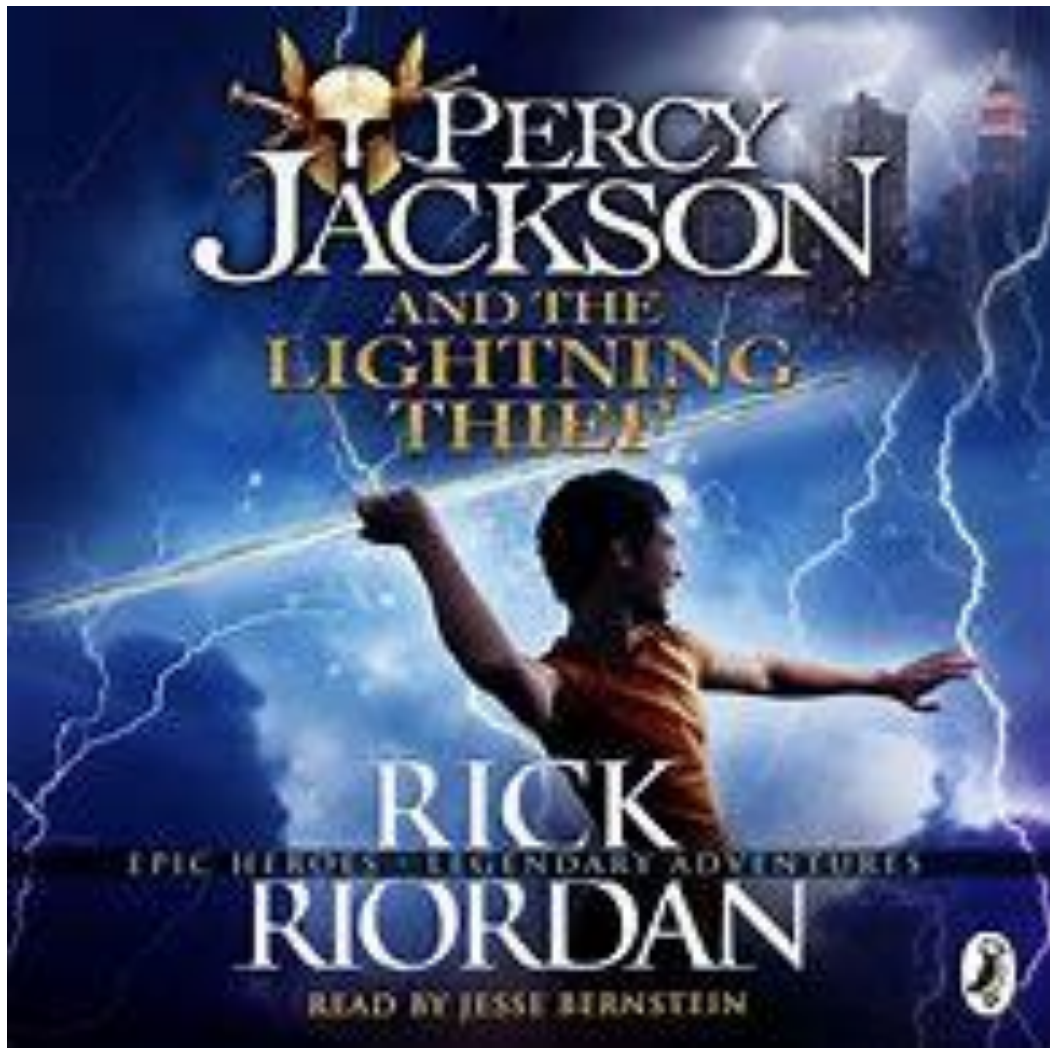
Assessment

Reading for meaning –To what extent is Achilles a hero?

You will be assessed on how well you construct a thesis statement and use quotations to support your ideas.

Percy Jackson and the Lightning Thief

The Heroes Journey – What does it mean to be a hero?



Unit Aims

To learn about the structure of a novel, characterisation and perspective

To understand the concept of the heroes journey and apply this to the novel.

To learn to track information across a text and organise information for meaning.

Assessment

To what extent is Percy Jackson a hero?

Development: What I need to work on to improve (from previous learning)

Local Heritage (Heraldry and History)

Human experience and the world around us. What does it mean to be Cornish?



Unit Aims

To explore how identity can be established and communicated.

To learn about Cornish myths and legends

To explore aspects of Cornish life, past and present.

Assessment

Reading for meaning – Who are Arthur and Merlin and how are they connected to Cornwall?

Development: What I need to work on to improve (from previous learning)

Shakespeare's Heroes and Villains

Human Nature: How does language reflect human nature?



Unit Aims

To learn the mechanics of Shakespearian by exploring a selection of soliloquies.
To explore the presentation of (some of) Shakespeare's most iconic heroes and villains
To confidently read Shakespeare aloud.

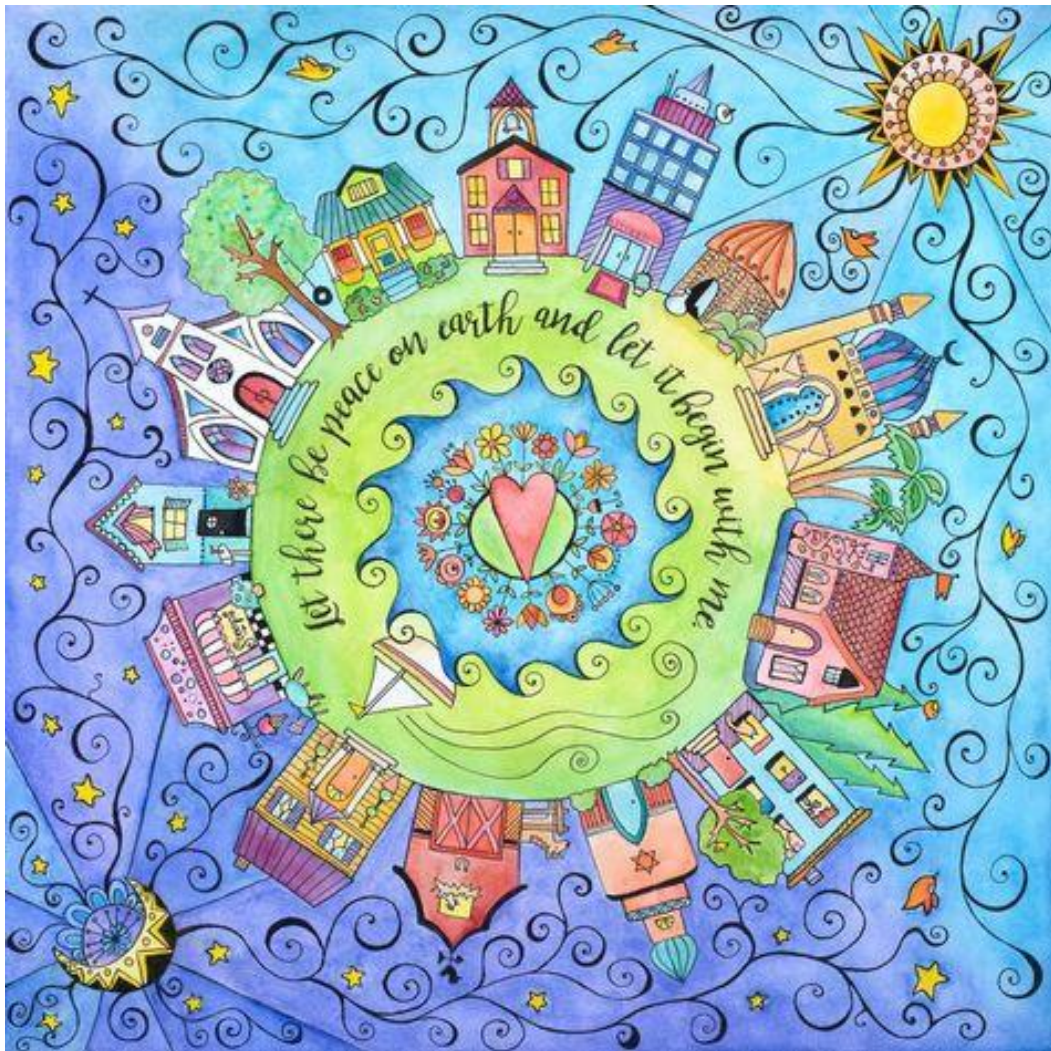
Assessment

Spoken Language – Recite / perform a soliloquy (or shared soliloquy) from memory.

Development: What I need to work on to improve (from previous learning)

A World in Writing

Human Nature: What can we learn from the world around us?



Unit Aims

To learn the

Assessment

Development: What I need to work on to improve (from previous learning)

Gateways to Other Worlds

Human experience and the world around us. How we can use writing to show our experiences of the world around us?



Unit Aims

To learn the

Assessment

Development: What I need to work on to improve (from previous learning)